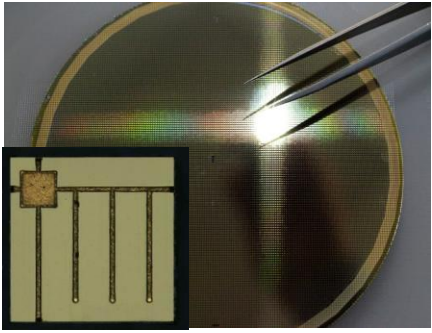


## RCLED-1270-3

High Power RCLED Chip – 3mW @ 1270nm



**Features:**

- Quantum Dot based InAs/AlGaAs/GaAs RCLED chip
- Reduced spectral width and enhanced power due to resonant cavity structure
- Unique wavelength range
- RoHS compliant

**Applications:**

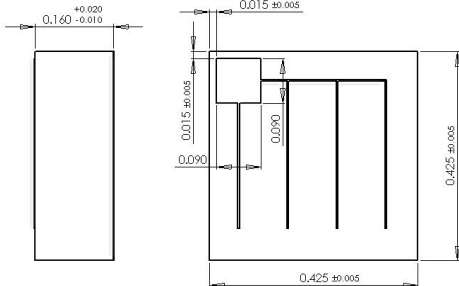
- Pulse oximetry: Total Hemoglobin, Oxygen Content, Carboxyhemoglobin, Methemoglobin

**Specification**

DATE: 14<sup>th</sup> Feb. 2014

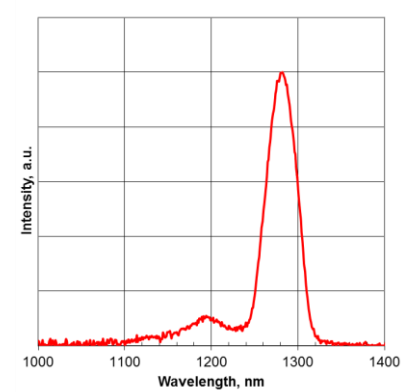
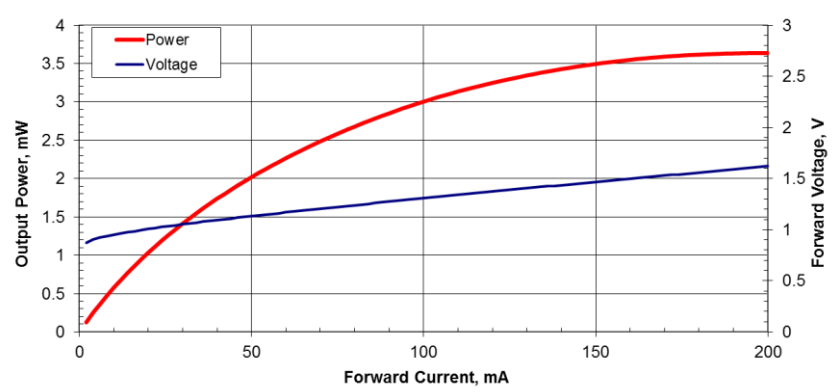
SPECIFICATIONS					
Test conditions: CW operation at temperature of 25°C					
Parameters	Symb.	Min.	Typ.	Max.	Unit
Operating current	$I_{op}$			200	mA
Operating voltage	$V_{op}$		1.3	2.0	V
Reverse voltage	$V_{rev}$			2.0	V
Optical output power at 100mA	$P_{out}$	2.5	3.0		mW
Centroid wavelength	$\lambda_C$	1235	1240	1245	nm
FWHM of spectrum	$\Delta\lambda$	30	40	50	nm
Operating temperature range	$T_{op}$	15		60	°C
Chip soldering temperature (20sec)	$T_{sol}$			330	°C

### DIMENSIONS in mm



**Design:**

- P-side up;
- wire-bondable Au bond pad with current spreaders on top side;
- back-side full (100%) area metallization, Au-finished, solderable



**NOTE:** Innolume product specifications are subject to change without notice